

We are deeply grateful for the heartwarming encouragement and support received from both within and outside of Japan in the aftermath of the Great East Japan Earthquake and Tsunami, which struck on March 11, 2011. The precious bonds created during this time will always be cherished.

About a month has passed since the end of a very hot summer, and the leaves have begun to change color. The 3rd Kamaishi Sennin Tōge Marathon took place on October 28, against a backdrop of mountains in the beautiful colors of autumn. More than 1,000 participants were able to enjoy the beautiful scenery of the autumn leaves. We will now bring you news from Iwate's reconstruction.

Yamada Bay, October 19



Prime Minister Noda visits Iwate during inspection of disaster-affected areas

October 27 saw Prime Minister Noda visit Iwate as part of his inspection of the reconstruction status of disaster-affected areas. It is his fourth visit to Iwate since the disaster.

Following a conference with Governor Tasso in the Prefectural Office, the Prime Minister moved on to the disaster-hit coastal region. He inspected the Suehirochō shopping district and the cleanup of the debris in the Fujiwara Pier in Miyako, as well as Tarō area's seawall. He also inspected marine products manufacturers in Yamada Town's Funakoshi area, before engaging in a dialogue with the residents of the Orikasa temporary housing district, and directly listening to the opinions of the disaster victims.



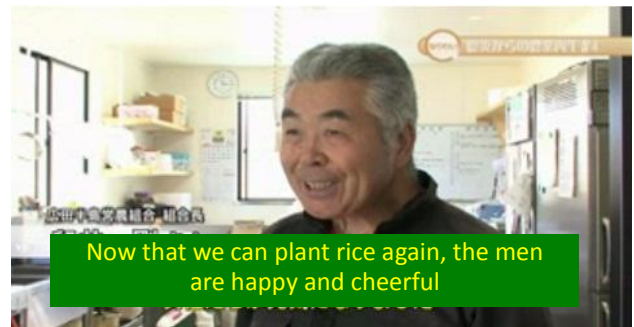
(Left)
Meeting with Governor Tasso in the Prefectural Office: (from right) PM Noda, Reconstruction Minister Hirano, Vice Minister Kikawada



(Right)
Governor Tasso presenting a formal request to the Prime Minister

Hirota Peninsula Agricultural Union's Struggle!

Flooding as a result of last year's tsunami left only one hectare of rice paddies suitable for cropping in Rikuzentakata City's Hirota Peninsula. This year, it is planned to increase the workable area to 8 hectares, and efforts are being made to introduce more large-scale machinery and create more overall productivity in the local industry. Hirota's Agricultural Union has helped to rebuild an agricultural processing plant. *Oyaki* made from the local seafood is seeing increased popularity. For Hirota Peninsula, the revival of agriculture is closely tied to the revival of the region as a whole.



President of the Hirota Peninsula Agricultural Union, Mr. Tsuyoshi Usui

For more info, check here: <http://bit.ly/raM4Ty>
Prefectural Broadcast "Iwate: One Step Towards Hope"
Ep. 29: "Hirota Peninsula Agricultural Union's Struggle!"
(Broadcast on October 22, 23, 24, 25, 28)



Thank you for all your support!

Donations for **survivors** (as of September 30):

Around ¥17.45746 billion (81,695 donations)

Distributed to disaster victims by local administrations

Donations for **reconstruction projects** (as of September 30):

Around ¥16.31765 billion (5,516 donations)

For prefectural restoration and reconstruction projects

Iwate Learning Hope Fund donations (as of September 30)

Around ¥4.72421 billion (7,600 donations)

To assist in the study and daily life of affected children by encouraging sport and study activities

Donations:

<http://www.pref.iwate.jp/~bousai/jyouhou/volunteer.html>

Casualties & Damage in Iwate (as of October 31, 2012)

Human casualties/deaths 4,671; Missing 1,194

Buildings destroyed (residences only, total/partial): 24,238

Iwate Disaster Information Portal (about damage, etc.):

<http://www.pref.iwate.jp/~bousai/taioujoukyou/index.html#new>

Fund-raising begins for 2016 Sports Festival in Iwate, the Land of Hope

On October 30, the Prefectural Office hosted the opening ceremony of the fund-raising campaign for the National Sports Festival and the National Sports Festival for the Disabled, both of which will take place in Iwate in 2016.



The 2016 "Iwate Land of Hope" sports festivals will have the theme of "spreading emotion and expressing thanks". Even while still recovering from the earthquake and tsunami of 2011, Iwate is busy preparing for the festivals, which it is hoped will united Iwate's people, companies and other groups, and help in our reconstruction.

Information regarding fund-raising:

http://www5.pref.iwate.jp/~2016kokutai/cgi-bin/news.cgi?f1=1351152788&f2=staff_kokutai_kana

Iwate Prefecture now recruiting people with experience working in prefectural governments as fixed-term employees

Iwate Prefecture is currently looking to hire adaptable and helpful people who have experience working in prefectural or other government positions, in order to advance our post-disaster reconstruction and other efforts.

Types of Positions and Number of Places Available:

Regular administration (20), integrated public works (23), construction (15), electric (6), machinery (6)

Applicants Should:

Be under the age of 63 (as of April 1, 2013)

Application Closing Date: November 14, 2012 (Wednesday)

Selection Criteria: Application screening, personal interview

Period of Contract: April 2, 2013 to March 31, 2016

Contact:

Iwate Prefecture,
Department of General Affairs,
Personnel Division

Telephone: 019-629-5072

For more information, please consult:

<http://www.pref.iwate.jp/view.rbz?cd=41984>

◆ Iwate Reconstruction Net also reports on Iwate's reconstruction, so why not check it out?

→ <http://www.pref.iwate.jp/view.rbz?cd=39696&ik=0&pnp=14>

The Billiken is inaugurated as mayor of Ōtsuchi Town (for one day)

On October 24, the 2nd Billiken came to Ōtsuchi Town to serve for one day as mayor. The Billiken is a symbol of Osaka's Tsūtenkaku Tower. The Billiken is known as a god of luck, who will bring good fortune to those who rub his feet. At present, the 2nd Billiken has ceded his position in Tsūtenkaku to the 3rd Billiken, and is touring with the 210 ("Tsū-ten") Symphony Orchestra. The group also performed a concert in Ōtsuchi the same day.



News from Iwate's Reconstruction Vol. 30 Published November 1, 2012

Published By: General Affairs Division, Bureau of Reconstruction ☎ 019-629-6922

✉ AJ0001@pref.iwate.jp ◆ News from Iwate's Reconstruction Archives → <http://bit.ly/qBFBOz>