

We are deeply grateful for the heart-warming encouragement and support received from both within and outside of Japan in the aftermath of the Great East Japan Earthquake, which struck on 11th March 2011. We will continue to cherish these bonds. We are moving forward with development plans for cities, towns and villages as we continue to discuss these plans with the local people. Here are some of the recent activities aimed at Iwate's rebuilding and recovery.

【 'Recovery Road' Construction Begins on the Oganyo Road in Tanohata Village 】



Ground-Breaking Ceremony for the 'Recovery Road'

A ground-breaking ceremony on Nov 20 marked the start of construction on a 'Recovery Road' in Tanohata Village.

Attended by national and prefectural representatives, Governor Tasso officially opened the ceremony by saying "We have high hopes for this centrally important project as it will give impetus to the entire recovery effort after the earthquake and tsunami. This ground-breaking ceremony is a big step towards soon being able to open the entire stretch of road."

A similar road, the 'Kamaishi-Yamada Road'(part of the Trans-Sanriku Freeway System), opened on March 5th just prior to the disaster. This proved a Road of Salvation for students from Unosumai Elementary and East Kamaishi Junior High who recounted the story of their escape along this road in a video-letter shown at the event.

After the dignitaries turned the first sod, tunnel excavations for the new 'Recovery Road' began in earnest.

>>>For more information...
<http://goo.gl/AxxaB>

Thank you all for your support.

Charitable Donations (As of October 31)
Approx 16,295,270,000yen (71,327 donations)

Public Works Contributions (As of October 31)
Approx 5,987,840,000yen (4,265 donations)

Donations to the 'Hope for Learning Fund of Iwate' (As of November 15)

Approx 2,166,000,000yen (3,372 donations)

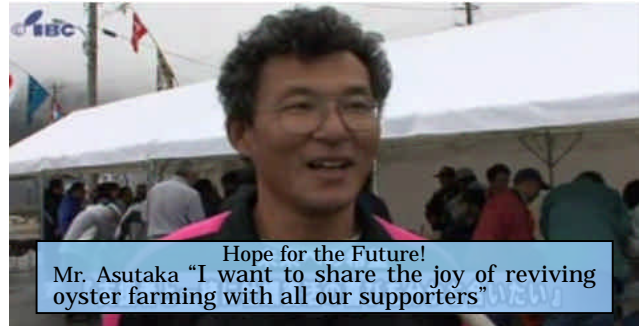
>>>Donations/Contributions accepted at:
<http://www.pref.iwate.jp/~bousai/jyouhou/volunteer.html>

【 Cooperating to Revive Oyster Farming in Miyako City 】

48-year-old Mr Katsuyoshi Asukata of Miyako City has been an oyster farmer for over 20 years. All 170 of his oyster cages were washed away in the March disaster, robbing him of his livelihood. He now lives with his family in temporary housing.

Because of the difficulty associated with rebuilding an aquaculture business single-handedly, a new program of 'ownership shares ' has been started. With the support of fishing cooperatives and the prefectural government, about 20 fishermen are participating in the program.

Forty people from around the country who became owners after the disaster attended a tour of the oyster fishery in early November.



"People are not treating it like it's someone else's problem. I've been sent letters of encouragement along with applications for owners' certificates, which gives me the strength to push on. I look forward to enjoying oysters together with the owners who have helped out with this program' said Mr Asukata.

This is a system where people from around the country pay upfront for year-old oysters that will be delivered next spring. This aims to raise funds for re-establishing oyster farms.

>>>For more information... <http://goo.gl/ZHKcX>

From the Prefectural TV Show
'Iwate Kibo no Chikara'.



Episode 25'Cooperating to Revive Oyster Farming'
(Broadcast Nov 21,22,24,27)

【 Casualties & Damage in Iwate (As of 30th November) 】

○Casualties Dead : 4,665 Missing : 1,409
○Structural Damage (Dwellings, totally or partially destroyed) : 24,735

【 'Keep Fighting Iwate!' Steam Train Powers on to Recovery 】

A C61 Steam Train named 'Keep Fighting Iwate!' travelled between Ichinoseki and Kitakami on the JR Line in a show of support for the region on November 19th.

Along with the passengers, many locals and amateur photographers crammed along the train line to catch a glimpse, and were invigorated by the imposing figure of the train as it slowly yet powerfully moved forward trailing white steam. Who could not feel that the train represented Iwate's steady progress on the path to recovery?



The 'Keep Fighting Iwate!' Steam Train preparing to depart Ichinoseki Station.

【 The December 2011 Supplementary Budget Announced ~ Continuing to Strive for Recovery ! 】

The prefectural government announced a supplementary budget in December aimed at promoting recovery efforts. It was considered by the December session of the Prefectural Assembly that convened on November 30th. The main budgetary programs are listed on the right. The budget established a 'Disaster Recovery Fund' to provide necessary funding for recovery projects. The fund will be used to provide subsidies to municipalities and underwrite a wide range of finely targeted prefectural projects, including assistance to rebuild damaged homes, community-building projects, shopping district revitalization projects etc.

Our projects always aim to promote the principles of 'Ensuring Safety', 'Rebuilding Lives' and 'Rebooting Industry'.

>>>For more information ...

<http://goo.gl/0yyNt>

Major Projects in the Supplementary Budget for Disaster Recovery

Program	Budget	Details
Disaster Recovery Fund Reserve	¥50 trillion	Money to be put into Disaster Recovery Fund to provide for finely targeted disaster recovery projects
Disaster Communication Equipment Recovery Project	¥3.197 trillion	To replace damaged communications networks used to transmit disaster related information
Housing Support Project	¥628 million	To assist repairs to housing not covered by the Disaster Relief Act.
Disaster Zone Mental Health Project	¥275 million	To establish 5 mental health centers.
Salmon and Trout Breeding Facility Recovery Project	¥2.364 trillion	To rebuild salmon hatcheries and secure an efficient fingerling production capacity.
Unshipped Old Cattle Relief Project	¥13 million	Temporary intake of old cattle that cannot be shipped.



News from Iwate's Reconstruction Vol.10 Published December 1st, 2011

By : General Affairs Division, Bureau of Reconstruction, Iwate Gov't

☎ 019-629-6922 ✉ AJ0001@pref.iwate.jp

For the latest Reconstruction/Recovery Newsletter → <http://goo.gl/j8h24>