

It has been 6 months since the Great East Japan Earthquake. We are deeply grateful for the heart-warming encouragement and support received from both within and outside of Japan. We will definitely cherish these 'bonds'. All the planned temporary housing has been completed and there are no more evacuation shelters.

We would like to share with you the current situation in Iwate as it moves towards recovery.

【Road to Recovery】 A total of 5 elementary and junior high schools from Otsuchi-cho will soon move to their temporary school complex.



Temporary school complex awaits its inauguration

The school building, damaged in the disaster, has been rebuilt as a temporary school complex and now waits its inauguration.

On the 13th a farewell party was held for the 4 schools (Otsuchi, Ando, Akahama and Kirikiri Elementary,) which were renting a part of Kirikiri elementary school before moving to the new temporary school complex.

The temporary school building would be used by a total of 5 schools including Otsuchi Elementary and JHS. An opening ceremony will be held on the 15th and elementary classes will start on the 20th, while JHS classes will start on the 22nd.

Thus, the educational scene for children is also improving.

【Thank You ! We're moving on ! 】
Meguro "Sanma" (saury fish) Festival

The annual "Meguro Sanma (saury fish) Festival" was held on 4th September at Shinagawa District in Tokyo. Over 20,000 people visited the festival and enjoyed more than 7000 free charcoal-grilled *sanma* fish brought sent from Miyako City.



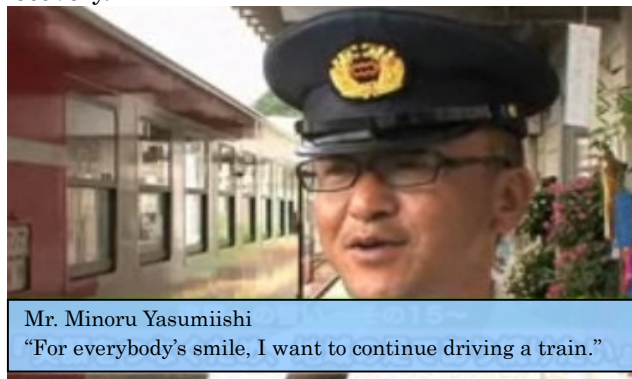
A Token of Appreciation:
Sanma Feast

Mayor Yamamoto of Miyako City said that the people from his city worked hard to deliver the *sanma* fish as a token of precious bonds with Shinagawa District and Meguro Station Shopping District who provided valuable support during the aftermath of the disaster.

【Sanriku Railway: An important local mode of transport and its road to recovery 】

In the days after the disaster, faced by fuel shortage, the Santetsu Railway provided free service. At present, the Santetsu is striving to return to its normal timetable.

The whole length of Santetsu Line is expected to become fully operational by April 2014. Although it is a long way to go, Santetsu will continue to walk together with local residents on their shared road to recovery.



Mr. Minoru Yasumiishi

"For everybody's smile, I want to continue driving a train."

Mr. Minoru Yasumiishi, a train driver with Santetsu says: Santetsu Company was established through the passion of local people living near the coastline. We will keep working hard in the hope that one day everyone will have smiles on their faces.

◆ For details: ... Kensei News Programme – "Iwate: The Power of Hope"

15th Episode: Local Transport ~ Road to Recovery (Broadcasted on 12th, 13th, 15th, 18th Sep.)

<http://bit.ly/gTPKbL>

Thank you all for your support!!

★ **Relief Donation Amount** (As of 31st August)
Approx. ¥ 15.2462 billion (66,195 donations)

★ **Contributions** (As of 31st August)
Approx. ¥ 5.2994 billion (3,658 donations)

★ **Iwate's Hope for Learning Fund** (As of 31st August) Approx. ¥ 1.25939 billion (2,267 contributions)

◀ How to donate ▶

<http://www.pref.iwate.jp/view.rbz?cd=32136>

【Information about Casualties & Damage in Iwate (As of 12th September)】

○ Human Casualties Deaths : 4,657

○ Buildings (Residences only; complete/partially damaged) : 24,682 / Missing Persons : 1,669

【“Kitakami Recovery Station” is OPEN !】



The representatives of member organizations and collaborating organizations at Recovery Station's inauguration.

Kitakami Recovery Station opened on 1st of September, which would serve as the hub of disaster victims' relief efforts and recovery of the disaster-hit areas. This aid & relief center was set up in front of Kitakami Station because of its geographical location, as this area is a connecting point between the coastal and inland areas.

This 'Station' has 4 main functions:

- ▽ Counselling center for people who have taken a refuge in the inland areas;
- ▽ A place to obtain information about coastal areas;
- ▽ A place to promote recovery activities;
- ▽ A place where people can come together.

The inauguration ceremony was held on the 1st and was attended by more than 40 representatives including the members of 6 organisations that make up the “Kitakami Recovery Support Association” as well as by the members of other cooperative organizations. All the members expressed a renewed sense of commitment towards the recovery efforts.

◆ For Details: ... <http://www.ifc.jp/index.php?itemid=401>

【The Cultural Heritage of Hiraizumi vol.2】

■Harmonization and Unity with Nature

The Pure Land gardens of Hiraizumi are archetypal expressions of the Japanese epistemological tradition of harmonization and unity with the natural environment, and the setting elements like background mountains is exemplary of this conceptual mode.

Perhaps the best example of this is the ponds at the center of the gardens, which were originally conceived in India as rectangular bodies of water. These ponds became rounded after transmission to Japan. The more natural shape of Japanese Pure Land garden ponds is illustrative of the belief that the gardens ought to be harmonized with the surrounding natural topography and environment.

In many ways, this philosophy is the precursor of current beliefs that humans are only a part of nature and must realize a mutually beneficial symbiosis.



Motsu-ji Teien

News from Iwate's Reconstruction Vol.5 Published September 15th, 2011

By : General Affairs Division, Bureau of Reconstruction, Iwate Gov't ☎ 019-629-6922 ✉ AJ0001@pref.iwate.jp

◆ For the latest Reconstruction/Recovery Newsletter → <http://goo.gl/j8h24>