

News from Iwate's Reconstruction

The news from Iwate as it moves toward reconstruction

Ganbaro, Iwate!
Let's stick together, Iwate!

三陸復興

Volume 85
June 1, 2015

We are deeply grateful for the heartwarming encouragement and support received from both within and outside of Japan in the aftermath of the Great East Japan Earthquake and Tsunami, which struck on March 11, 2011. The precious bonds created during this time will always be cherished.
Iwate is bursting with green: plants are blooming in the hills, and the rice is all planted before the rainy season begins in late June.
We will now bring you the news from Iwate's reconstruction.

The Hashino Iron Mining and Smelting Site in Kamaishi to be designated as a...

World Heritage Site

Kamaishi

On May 4, 2015 (Mon.), the "Sites of Japan's Meiji Industrial Revolution" were recommended to be registered as a World Heritage Site by ICOMOS (International Council on Monuments and Sites), the UNESCO advisory panel. These sites also include Kamaishi's Hashino Iron Mining and Smelting Site in Iwate Prefecture.

The "Sites of Japan's Meiji Industrial Revolution" are related to the heavy industry that contributed to Japan's industrialization in the mid-to-late 19th century, such as shipbuilding, iron and steel manufacturing, and coal mining industries.

The Sites are composed of 23 spots in 11 cities in 8 prefectures, such as the Yawata Steel Works (Kitakyushu City, Fukuoka Prefecture) and the Hashima Coal Mines (Nagasaki City, Nagasaki Prefecture), known as "Battleship Island." Iwate's Hashino Iron Mining and Smelting Site is Japan's oldest extant Western-style blast furnace.

The decision on World Heritage status will be decided at the end of June when the World Heritage Committee meets for its

annual session.

In the two days after receiving the nomination, some 2,000 people visited the Hashino Information Center next to the site. There are high hopes that this will prove a boon for the reconstruction from the Great East Japan Earthquake and Tsunami.

Shuttle Bus Service Starting in June

Starting on June 7 (Sun.), a shuttle bus will run the 33km distance between JR Kamaishi Station to the Hashino Iron Mining and Smelting Site.

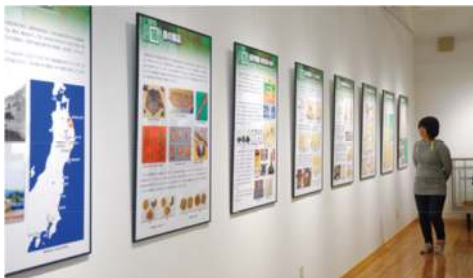
◆ Shuttle Bus

Days in service: June 7, June 14, and weekends and holidays from June 20 to early December
Reservations required.

(Departs from JR Kamaishi Station at 10:00 and 13:00)

Cost: Senior high school students and above 2,000 yen / Elementary and junior high school students 1,000 yen / Preschool or younger FREE

Contact: Kamaishi Tourism Association 0193-22-5835 (Every day except Wednesday from 9 a.m. to 6 p.m.)



Displays at the Information Center at Hashino



Hashino Blast Furnace No. 3



Hashino Blast Furnace No. 2

Recruiting for a Full-Fledged Reconstruction!

For more information:

<http://www2.pref.iwate.jp/~hp0741/>

Search

*Information available only in Japanese.

We are recruiting people for term-limited contracts who are pursuing jobs in the reconstruction field. Work with us to build Iwate's future.

Employment term (tentative) - April 1, 2016 - March 31, 2019 (3 years)

Occupation Type	No. of Recruits	Main Place of Employment	Main Job Duties
General Work	47	[Prefectural hires] A branch office (Regional Development Bureau, etc.) or the main prefectural office	• Work related to support projects for restoration and reconstruction • Approvals and licenses, general job duties
		[Municipal hires] Miyako City, Rikuzentakata City, Otsuchi Town, or Yamada Town	• Front window services, national health insurance, consultation for those working on rebuilding their lives from the disaster
Public Works	38	[Prefectural hires] Mainly in one of the branch offices in the coastal regions (Regional Development Bureau, etc.) or the main prefectural office	• Designing, estimating costs, placing orders, supervising, etc. for construction on rebuilding public facilities (seawalls, ports, fishing harbors, fishing grounds, roads, rivers, water services, etc.)
		[Municipal hires] Miyako City, Rikuzentakata City, Otsuchi Town, or Tanohata Village	• Designing, estimating costs, placing orders, supervising construction, etc. for rebuilding public facilities (roads, water and sewage, fishing harbors, etc.)
Construction	2	[Municipal hires only] Miyako City or Yamada Town	• Verification of building construction, etc. • Designing, estimating costs, placing orders, surveillance of public facilities

General Work

Application period
May 29, 2015 (Fri) - June 19 (Fri)

First exam - July 12, 2015 (Sun)

Public Works/Construction

Application period
May 29, 2015 (Fri) - June 19 (Fri)

First exam - Applicant screening

An Employment Information Session held by Disaster-affected Iwate, Miyagi, & Fukushima

- June 6, 2015 (Sat.)
Starts at 12 (doors open at 11:30)
- Tokyo Metropolitan Government Building
Metropolitan Assembly Building 1st Floor Citizens' Hall

We are recruiting members for the Iwate Reconstruction Supporters Team!

Know, Buy, Eat, Go – and Help Support Us!



We are now recruiting both individual and group (corporate or other) members in the Greater Tokyo Area for the "Iwate Reconstruction Supporters". Members are e-mailed information regarding reconstruction and tourism in Iwate, and upcoming events in the Tokyo area. (Information only available in Japanese.)

For more information, please see the website of the Tokyo Branch Office of the Iwate Prefectural Government:

Iwate Ooendan

Search

Free to Register!

Fishermen Workshops and Sappa Boats:

A festival celebrating reconstruction

Tanohata

In Tanohata Village's Tsukue district lies the Tsukuehama Ban'yagun, or Fishermen's Village of Tsukuehama. From May 2, 2015 through May 6 (Sat. – Wed.), a festival was organized by the NPO Taikenmura Tanohata Network to celebrate the reconstruction of the village and its "Sappa" boats.

The Fisherman's Village needed to be completely rebuilt following the earthquake and tsunami. With its reconstruction, the popular Sappa Boat Adventure attraction has been brought to the village through its main office and port now located in Tsukuehama, and the Fisherman's Village can now begin full-fledged operations.

Many tourists from both within and outside of Iwate came to visit during the festival. Along with the Sappa Boat Adventure tours, people were able to experience the day-to-day life of a fishing village through activities like making salt by boiling down salt water, and a cooking class which taught how to remove the shells of fresh sea urchins and sea squirts.



The popular Sappa Boat Adventure tour
(photo provided by Taikenmura Tanohata Network)

Tohoku's Rakuten Golden Eagles Donate Artificial Grass to Otsuchi

Otsuchi

On May 2, 2015 (Sat.), 46 people from Otsuchi, including elementary and junior high school students and their guardians, were invited to the Tohoku Rakuten Golden Eagles vs. Saitama Seibu Lions baseball game (at the Rakuten Kobo Stadium in Miyagi) for the second Tohoku Smile Day.

This was held in part to support the reconstruction from the Great East Japan Earthquake and Tsunami.

The Tohoku Rakuten Golden Eagles also began fundraising to donate artificial grass for a multi-purpose sports ground to be built in Otsuchi Town.

These activities are a part of the Tohoku Smile Project, which uses the power of sports to bring happiness to the children of Tohoku.

Otsuchi plans to use approximately 12,000 m² of artificial grass to construct the "Otsuchi Children Green Field" (preliminary name). The field should be completed by March 2016.



Fund-raising staff (photo: Otsuchi Town)

Many young people are diligently helping the affected area of Sanriku move toward a full reconstruction. The section "People for Sanriku's Future" introduces these young people and their powerful feelings.

Part 39 introduces Mr. Ryota Anjo's efforts.

Profile:

Originally from Kawasaki City, Kanagawa Prefecture.

As a second-year at Kanagawa Prefectural Hiratsuka Agricultural High School, Anjo visited the tsunami-affected region, and met with Yonesaki Apple producers in Rikuzentakata on the southern coast.

His training as an apple farmer began through this connection, but a sudden illness brought a halt to his activities. When the other farmers heard about this they sent him apples and get-well e-mails. It was then that Anjo decided to grow Yonesaki Apples.

In April 2015, Anjo moved to Rikuzentakata to grow apples.

A door opens through human connection

As a high school student, Anjo traveled the Sanriku coast to see the tsunami-affected region for himself. During his travels, he happened to stop by the Rikuzentakata Hamanasu Fruit Market.

Anjo had already been attending an agricultural high school to train as a farmer, so as a result of this meeting, he got the chance to train at a Rikuzentakata



Yonesaki Apple
Farming Trainee
Ryota Anjo



"I want to grow
delicious apples!"

apple orchard in May 2013.

"The orchard was quiet and peaceful, enough to make me forget I was in a city devastated by the tsunami," he said of his early days in Rikuzentakata. "The people were kind and friendly, and I realized that I wanted to stay in the city."

This April, he moved into a temporary housing unit and started his new life in Rikuzentakata.

A reconstruction that keeps the best parts of the past intact

"When I first visited Rikuzentakata, the main part of town was still a barren field," says Anjo, "but now, thanks to the giant conveyor belt and the land-raising projects, things seem to be slowly looking up."

Anjo has hope for the future. "I think to a certain extent, you can't change the fact that some people will move away. But I know there are more and more people like me who have fallen in love with this city and want to move to the area," he told us. "Rikuzentakata has long been a great place to grow delicious apples. I hope people will preserve the good parts of the past as they were, while continuing to move forward toward reconstruction little by little."

Casualties & Damage in Iwate As of April 30, 2015

- ▶ Human casualties/deaths: 4,672; Missing: 1,129
- ▶ Buildings destroyed (residences only, total/partial): 26,163

To make a donation to aid in Iwate's reconstruction:
www.pref.iwate.jp/fukkounougoki/dayori/news/011100.html

Thank you for all your support!

As of April 30, 2015

Donations for survivors: Around ¥18.38074 billion (91,452 donations)

Donations for reconstruction projects: Around ¥19.67782 billion (7,305 donations)

Iwate Learning Hope Fund donations: Around ¥7.31347 billion (15,346 donations)

※ This fund is to assist in the study and daily life of affected children by encouraging sport and study activities.

News from Iwate's Reconstruction, Volume 85. June 1, 2015.

Published by the General Affairs Division, Bureau of Reconstruction, Iwate Prefecture. TEL: 019-629-6925
For the News from Iwate's Reconstruction archives: <http://www.pref.iwate.jp/fukkounougoki/dayori/news/>

Editing & Printing: SYNAPSE

News from Iwate's Reconstruction Volume 86 will be published on June 15.